



**Professional HVAC Fan
& Motors Manufacturer**

— Air-Conditioning Impellers



Website

Ningbo Longwell Electric Technology Co.,Ltd

TEL:+86 (574) 6218 9863

Skype : Brucehappy1

Fax:+86 18358274663

Whatsapp:+0086 18358274663

E-mail:sales@zjlongwell.com

Web:https://www.longwellfans.com/

Address:#NO.100 ,South of Xuxiang River ,Ditang District, Yuyao,Ningbo
Zhejiang Province,China 315400



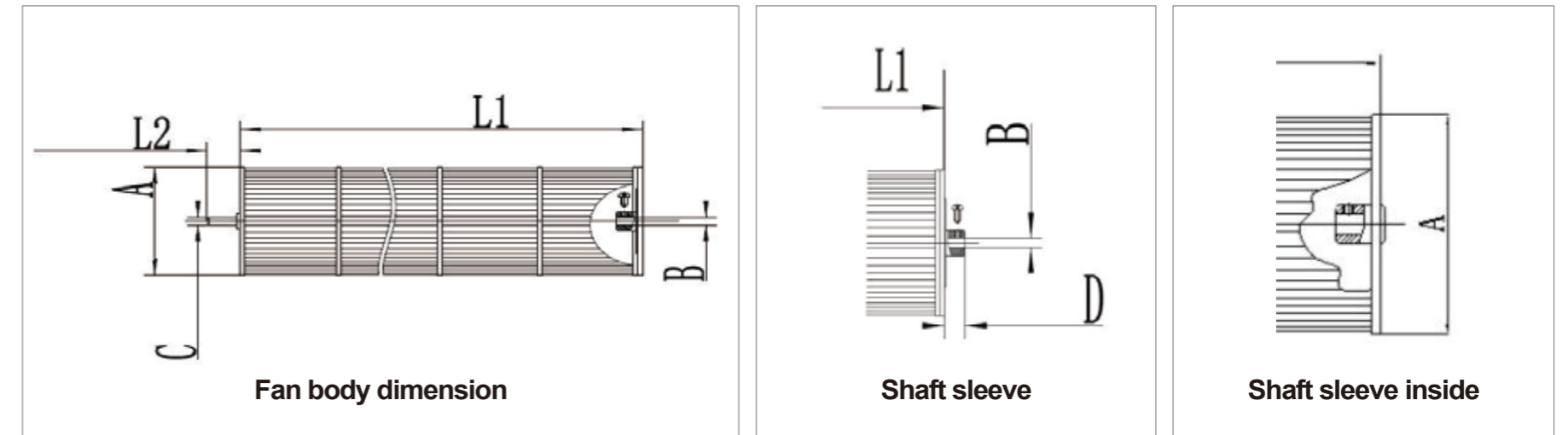
CATALOGUE

- 01-06 Cross Flow Impellers(Plastic)
- 07-22 Axial Fan Impellers(Plastic)
- 23-60 Centrifugal Fan Impellers(Plastic)

Cross Flow Impellers(Plastic)

Professional HVAC Fan & Motors Manufacturer

APPLIACATION: Air Conditioning,Air curtain,Ventilation Fans,Heaters,Air purifier ...



NOTE:Any customization design require is acceptable (for dimensions,materials,color,performances)



Diameter-A (mm)	Length-L1 (mm)	Shaft Diameter-C (mm)	Shaft Length-L2 (mm)	Shaft Sleeve-B (mm)	Shaft Sleeve Length-D (mm)	Color	Blades Qty	Rotation (See from shaft end)	Set Screw
Φ50	≤1000	Φ4,6,8 10,12	≤50	Φ4,6,8 10,12	inside/outsize ≤35mm	Customization by customer generally black, white blue, green	25	C.C.W	M4.M5
Φ60							31		
Φ71							35		
Φ76							35		
Φ81							35		
Φ87							35		
Φ90							28		
Φ91							35		
Φ93							35		
Φ95							35		
Φ97	35								
Φ101.5	≤1200	Φ4,6,8 10,12	≤50	Φ4,6,8 10,12	inside/outsize ≤35mm	Customization by customer generally black, white blue, green	35	C.C.W	M4.M5
Φ105							35		
Φ108							28		
Φ109							35		
Φ112							28		
Φ115							35		
Φ120							26		
Φ121							35		
Φ125							35		
Φ135							35		
Φ150	24								
Φ160	32								
Φ180	35								

Model	Diameter (mm)	Length (mm)	Color	Bearing type	Bushing diameter(mm)	Bushing length(mm)	Steel shaft diameter(mm)	Steel shaft length(mm)	Steel shaft cross-section	Rotation (See from shaft end)
LW50×190-01	50	190	Black	External	4	10	4	12	/	C.C.W
LW50×380-01	50	380	Black	External	4	10	4	12	/	C.C.W
LW50×400-01	50	400	Natural colour	Built-in	6	/	6	/	/	C.W
LW50×570-01	50	570	Black	External	4	10	4	12	/	C.C.W
LW62×190-01	60	190	Black	External	4	10	4	12	/	C.C.W
LW62×380-01	60	380	Black	External	4	10	4	12	/	C.C.W
LW62×570-01	60	570	Black	External	4	10	4	12	/	C.C.W
LW71×80-01	71	80	Black	Built-in	8	/	8	60	/	C.W
LW71×120-01	71	120	Black	Built-in	8	/	8	60	/	C.C.W
LW90.4×375-01	90.4	375	Black	Built-in	4	/	6	60	15mm	C.W
LW90.4×615-01	90.4	615	Black	Built-in	8	/	8	60	15mm	C.W
LW90.4×750-01	90.4	750	Blue	External	8	30	6	25	/	C.C.W
LW91×250-01	91	250	/	External	8	10	6	25	/	C.W
LW91×560-01	91	560	Blue	Built-in	8	/	6	25	/	C.C.W
LW91×648-01	91	648	/	Built-in	8	/	6	22	/	C.C.W
LW108×523-01	108	523	Black	External	8	12	6	44	20mm	C.C.W
LW108×523-02	108	523	Black	External	6	/	6	25	/	C.C.W
LW107×660-01	107	660	Blue	Built-in	8	/	6	25	/	C.C.W
LW108×780-01	108	780	Blue	Built-in	8	/	6	25	/	C.C.W
LW108×800-01	108	800	Blue	External	8	18	6	28	/	C.C.W
LW108×800-02	108	800	Blue	External	8	14	6	25	/	C.C.W
LW108×830-01	108	830	Black	Built-in	8	/	6	25	/	C.C.W
LW108×830-02	108	830	Black	External	8	28	6	28	/	C.C.W
LW107×833-01	107	833	Black	Built-in	8	/	6	25	/	C.C.W
LW108×838-01	108	838	Blue	Built-in	8	/	6	27	/	C.C.W
LW108×900-01	108	900	Black	External	8	25	6	25	/	C.C.W
LW108×978-01	108	978	Blue	Built-in	8	/	6	28	/	C.C.W
LW107×660-01	108	660	Blue	Built-in	8	/	6	25	/	C.C.W
LW107×750-02	107	750	White	External	8	/	6	25	/	C.C.W
LW107×780-01	108	780	Blue	Built-in	8	/	6	25	/	C.C.W
LW107×800-01	107	800	Black	External	8	14	6	27	/	C.C.W

Model	Diameter (mm)	Length (mm)	Color	Bearing type	Bushing diameter(mm)	Bushing length(mm)	Steel shaft diameter(mm)	Steel shaft length(mm)	Steel shaft cross-section	Rotation (See from shaft end)
LW107×800-02	108	800	Blue	External	8	14	6	25	/	C.C.W
LW92×646-01	92	646	Blue	Built-in	8	/	6	25	/	C.C.W
LW95×520-01	95	520	Blue	External	8	14	6	25	/	C.C.W
LW95×540-01	95	540	Blue	External	8	14	6	25	/	C.C.W
LW95×620-01	95	620	Blue	Built-in	8	/	6	25	/	C.C.W
LW95×640-01	95	640	Blue	Built-in	8	/	6	25	/	C.C.W
LW95×650-01	95	650	Blue	External	8	14	6	25	/	C.C.W
LW95×660-01	95	660	Blue	External	8	14	6	25	/	C.C.W
LW95×680-01	95	680	Blue	Built-in	8	/	6	25	/	C.C.W
LW95×685-01	95	685	Black	External	8	30	6	25	/	C.C.W
LW95×700-01	95	700	Black	External	8	14	6	25	/	C.C.W
LW97×706-01	97	706	Black	External	8	14	6	25	/	C.C.W
LW95×710-01	95	710	Blue	Built-in	8	/	6	27	/	C.C.W
LW98×710-01	98	710	Black	External	8	24	6	25	/	C.C.W
LW106×725-01	106	725	Blue	External	8	14	6	27	/	C.C.W
LW100×743-01	100	743	Black	Built-in	8	5	6	25	/	C.C.W
LW111.5×753-01	111.5	753	Blue	Built-in	8	/	6	27	/	C.C.W
LW101×755-01	101	755	Black	Built-in	8	18	6	25	/	C.C.W
LW97×766-01	97	766	Black	Built-in	8	/	6	27	/	C.C.W
LW101.5×580-01	101.5	580	Blue	External	8	/	6	25	/	C.C.W
LW101.5×640-01	101.5	640	Blue	External	8	14	6	25	/	C.C.W
LW101.5×690-01	101.5	690	Blue	External	8	14	6	25	/	/
LW101.5×710-01	101.5	710	Blue	Built-in	8	/	6	25	/	/
LW101.5×710-02	101.5	710	Blue	External	8	14	6	25	/	/
LW101.5×740-01	101.5	740	Blue	Built-in	8	/	6	25	/	C.C.W
LW101.5×740-02	101.5	900	Blue	External	8	14	6	25	/	C.C.W
LW101.5×770-01	101.5	740	Blue	Built-in	8	/	6	25	/	C.C.W
LW101.5×775-01	101.5	770	Blue	Built-in	8	/	6	25	/	C.C.W
LW101.5×785-01	101.5	785	Blue	External	8	30	6	25	/	C.C.W
LW101.5×790-01	101.5	790	Black	Built-in	8	/	6	25	/	C.C.W
LW101.5×810-01	101.5	810	Blue	External	8	20	6	25	/	C.C.W

Model	Diameter (mm)	Length (mm)	Color	Bearing type	Bushing diameter(mm)	Bushing length(mm)	Steel shaft diameter(mm)	Steel shaft length(mm)	Steel shaft cross-section	Rotation (See from shaft end)
LW101.5×810-02	101.5	810	Blue	Built-in	8	/	6	25	/	C.C.W
LW101.5×840-01	101.5	840	Black	Built-in	8	/	6	25	/	C.C.W
LW101.5×840-02	101.5	840	Black	External	8	14	6	25	/	/
LW101.5×860-01	101.5	860	Blue	Built-in	8	/	6	25	/	C.C.W
LW101.5×890-01	101.5	890	Blue	External	8	/	6	25	/	C.C.W
LW101.5×900-01	101.5	900	Blue	External	8	14	6	25	/	C.C.W
LW101.5×900-02	101.5	900	Blue	External	8	14	6	25	/	C.C.W
LW101.5×970-02	101.5	970	Blue	Built-in	8	/	6	25	/	C.C.W
LW101.5×1080-01	101.5	1080	Blue	External	8	20	6	25	/	C.C.W
LW107×840-01	107	840	Black	Built-in	8	/	6	25	/	C.C.W
LW95×710-02	95	710	Blue	External	8	/	6	25	/	C.C.W
LW95×710-03	95	710	Blue	External	8	30	6	25	/	C.C.W
LW95×730-01	95	730	Blue	Built-in	8	/	6	25	/	C.C.W
LW95×850-01	95	850	Blue	Built-in	8	5	6	25	/	C.C.W
LW100×790-01	100	790	Black	Built-in	8	/	6	25	/	C.C.W
LW100×850-01	100	850	Black	External	5	14	6	25	/	C.C.W
LW101×850-01	101	850	Black	Built-in	8	5	6	25	/	C.C.W
LW107×882-01	107	882	Black	External	8	14	6	25	/	C.C.W
LW106×895-01	106	895	Black	External	8	14	6	25	/	C.C.W
LW107×895-01	107	895	Blue	External	8	25	6	28	/	C.C.W
LW107×900-01	107	900	Blue	Built-in	8	/	6	25	/	C.C.W
LW107×900-02	107	900	Black	External	8	14	6	25	/	C.C.W
LW107×900-03	107	900	Blue	External	8	25	6	25	/	C.C.W
LW107×966-01	107	966	Blue	External	8	14	6	25	/	C.C.W
LW107×980-01	107	980	Blue	Built-in	8	/	6	25	/	C.C.W
LW107×1040-02	107	1040	Black	External	8	14	6	25	/	C.C.W
LW98×790-01	98	790	Black	Built-in	8	/	6	25	/	C.C.W
LW98×955-01	98	955	Black	External	8	14	6	27	/	C.C.W
LW118×955-01	118	955	Blue	Built-in	8	/	6	27	/	C.C.W
LW121×540-01	121	540	Blue	Built-in	8	/	6	30	/	C.W
LW121×790-01	121	790	Blue	Built-in	8	/	6	27	/	C.C.W

Model	Diameter (mm)	Length (mm)	Color	Bearing type	Bushing diameter(mm)	Bushing length(mm)	Steel shaft diameter(mm)	Steel shaft length(mm)	Steel shaft cross-section	Rotation (See from shaft end)
LW121×955-01	121	955	Blue	Built-in	8	/	6	25	/	C.C.W
LW121×1028-01	121	1028	Blue	Built-in	8	/	6	25	/	C.C.W
LW102×875-01	102	875	Black	External	8	14	6	25	/	C.C.W
LW102×570-01	102	570	Blue	Built-in	8	/	6	30	/	C.W
LW109×1025-01	109	1025	Blue	Built-in	8	/	6	15	/	C.C.W
LW109×700-01	109	700	Black	Built-in	8	/	6	25	/	C.C.W
LW105×420-01	105	420	Blue	Built-in	8	/	6	15	/	C.C.W
LW105×520-01	105	520	Blue	Built-in	8	/	6	30	/	C.C.W
LW105×525-01	105	525	Blue	Built-in	8	14	6	60	/	C.C.W
LW105×556-01	105	556	Black	External	8	10	6	30	/	C.C.W
LW105×624-01	105	624	Black	External	8	10	6	24	/	C.C.W
LW105×695-01	105	695	Blue	Built-in	8	/	6	25	/	C.C.W
LW105×790-01	105	790	Blue	Built-in	8	/	6	25	/	C.C.W
LW142×420-01	142	420	Black	Built-in	8	/	10	40	8.5×20mm	C.C.W
LW142×834-01	142	834	Black	Built-in	8	/	10	40	8.5×20mm	C.C.W
LW1115×790-01	115	790	Blue	Built-in	8	/	6	25	/	C.C.W
LW115×955-01	115	955	Blue	Built-in	8	/	6	25	/	C.C.W
LW115×1015-01	115	1015	Blue	External	8	25	6	25	/	C.C.W

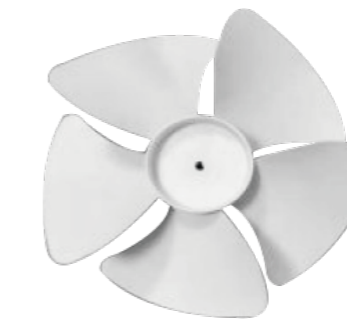
Axial Fan Impellers(Plastic)

Professional HVAC Fan & Motors Manufacturer



LW120x29

Material	ABS+GF
Axle hole	Φ3mm
Height	25mm
Weight	80g



LW130x45

Material	ABS+GF
Axle hole	Φ4mm
Height	45mm
Weight	38g



LW150x49-10

Material	ABS+GF
Axle hole	Φ8-7/5mm
Height	49mm
Weight	70g



LW151x51-10

Operating Direction	C.C.W
Mounting Hole	Φ6-4.55



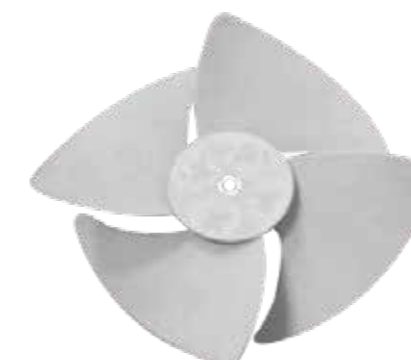
LW170x65

Material	ABS+GF
Axle hole	Φ8mm
Height	65mm
Weight	100g



LW205x40

Material	Reforced AS,ABS,ABS,PP
Color	Customized



LW230x70

Material	ABS+GF
Axle hole	Φ8mm
Height	70mm
Weight	175g



LW260x91-5

Operating Direction	C.C.W
Mounting Hole	Φ8-7



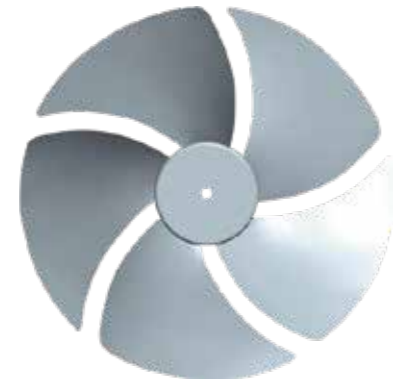
LW265x95-3

Operating Direction	C.C.W
Mounting Hole	Φ8-6.5



LW280x122-3

Operating Direction	C.C.W
Mounting Hole	Φ8-7-6



LW286x90-5

Operating Direction	C.C.W
Mounting Hole	Φ8-5



LW290x72

Material	Reforced AS,ABS,ABS,PP
Color	Customized



LW320x119-3

Operating Direction	C.C.W
Mounting Hole	Φ8-7-6



LW320x119-3

Operating Direction	C.W
Mounting Hole	Φ8-7-6



LW320x130

Material	Reforced AS,ABS,ABS,PP
Color	Customized



LW290x90

Material	Reforced AS,ABS,ABS,PP
Color	Customized



LW300x65

Material	Reforced AS,ABS,ABS,PP
Color	Customized



LW310x90

Material	Reforced AS,ABS,ABS,PP
Color	Customized



LW320x132

Material	Reforced AS,ABS,ABS,PP
Color	Customized



LW320x140

Material	Reforced AS,ABS,ABS,PP
Color	Customized



LW320x142

Material	ABS+GF
Axle hole	Φ8mm
Height	142mm
Weight	380g



LW313x50.5-3

Operating Direction	C.C.W
Mounting Hole	Φ8



LW320x65

Material	Reforced AS,ABS,ABS,PP
Color	Customized



LW320x105-3

Operating Direction	C.W
Mounting Hole	Φ8



LW320x142

Material	Reforced AS,ABS,ABS,PP
Color	Customized



LW320x143-3

Operating Direction	C.C.W
Mounting Hole	Φ8-7



LW325x137

Material	Reforced AS,ABS,ABS,PP
Color	Customized



LW325x137

Material	Reforced AS,ABS,ABS,PP
Color	Customized



LW330x100

Material	ABS+GF
Axle hole	Φ8mm
Height	100mm
Weight	310g



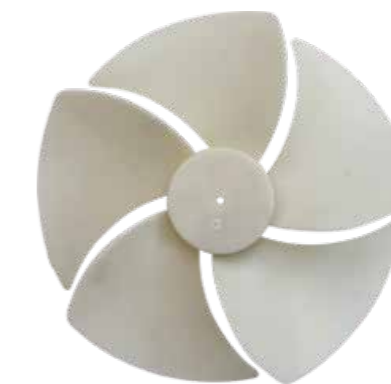
LW350x95

Material	Reforced AS,ABS,ABS,PP
Color	Customized



LW380x130

Material	Reforced AS,ABS,ABS,PP
Color	Customized



LW385x116

Material	Reforced AS,ABS,ABS,PP
Color	Customized



LW385x116

Material	Reforced AS,ABS,ABS,PP
Color	Customized



LW350x130

Material	Reforced AS,ABS,ABS,PP
Color	Customized



LW355x138-3

Operating Direction	C.W
Mounting Hole	Φ8-7



LW375x125

Material	Reforced AS,ABS,ABS,PP
Color	Customized



LW388x75

Material	Reforced AS,ABS,ABS,PP
Color	Customized



LW388x75

Material	Reforced AS,ABS,ABS,PP
Color	Customized



LW389x119-3

Operating Direction	C.C.W
Mounting Hole	Φ8-7



LW375x125

Material	Reforced AS,ABS,ABS,PP
Color	Customized



LW375x125

Material	Reforced AS,ABS,ABS,PP
Color	Customized



LW380x130

Material	Reforced AS,ABS,ABS,PP
Color	Customized



LW390x140

Material	Reforced AS,ABS,ABS,PP
Color	Customized



LW390x140-3

Operating Direction	C.W
Mounting Hole	Φ8-7



LW391x40-5

Operating Direction	C.W
Mounting Hole	Φ8



LW398x85

Material	Reforced AS,ABS,ABS,PP
Color	Customized



LW398x98

Material	Reforced AS,ABS,ABS,PP
Color	Customized



LW398x98

Material	Reforced AS,ABS,ABS,PP
Color	Customized



LW405x129

Material	Reforced AS,ABS,ABS,PP
Color	Customized



LW406x96-4

Operating Direction	C.W
Mounting Hole	Φ12-10



LW406x100

Material	ABS+GF
Axle hole	Φ12mm
Height	100mm
Weight	390g



LW398x118-5

Operating Direction	C.C.W
Mounting Hole	Φ12-10



LW400x115

Material	Reforced AS,ABS,ABS,PP
Color	Customized



LW400x122

Material	Reforced AS,ABS,ABS,PP
Color	Customized



LW407x65

Material	ABS+GF
Axle hole	Φ12mm
Height	56mm
Weight	395g



LW408x115

Material	Reforced AS,ABS,ABS,PP
Color	Customized



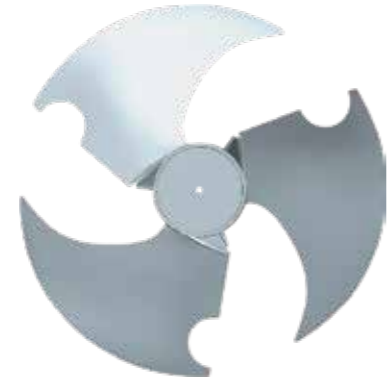
LW408x132

Material	Reforced AS,ABS,ABS,PP
Color	Customized



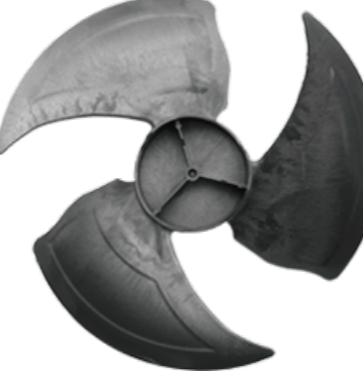
LW400x125-4

Operating Direction	C.C.W
Mounting Hole	Φ8



LW401x115-3

Operating Direction	C.W
Mounting Hole	Φ8-7



LW405x129

Material	Reforced AS,ABS,ABS,PP
Color	Customized



LW408x132

Material	Reforced AS,ABS,ABS,PP
Color	Customized



LW408x132-3

Operating Direction	C.C.W
Mounting Hole	Φ8-7



LW408x138

Material	Reforced AS,ABS,ABS,PP
Color	Customized



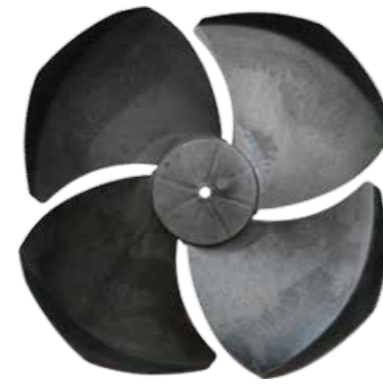
LW415x125

Material	Reforced AS,ABS,ABS,PP
Color	Customized



LW415x125

Material	Reforced AS,ABS,ABS,PP
Color	Customized



LW418x130

Material	Reforced AS,ABS,ABS,PP
Color	Customized



LW420x155

Material	Reforced AS,ABS,ABS,PP
Color	Customized



LW420x155

Material	Reforced AS,ABS,ABS,PP
Color	Customized



LW429x119-3

Operating Direction	C.C.W
Mounting Hole	Φ8-7



LW420x80

Material	Reforced AS,ABS,ABS,PP
Color	Customized



LW420x120-3

Operating Direction	C.W
Mounting Hole	Φ8-7



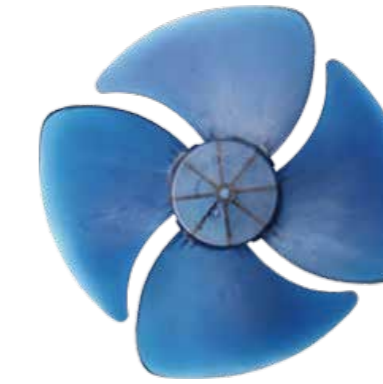
LW420x140

Material	Reforced AS,ABS,ABS,PP
Color	Customized



LW439x153-3

Operating Direction	C.W
Mounting Hole	Φ8-7



LW440x150

Material	Reforced AS,ABS,ABS,PP
Color	Customized



LW440x150

Material	Reforced AS,ABS,ABS,PP
Color	Customized



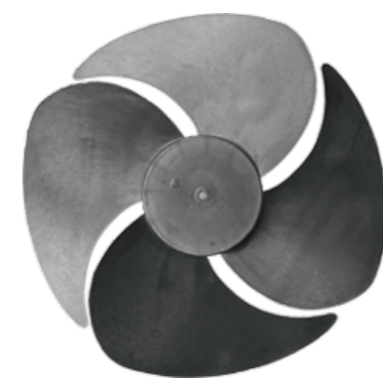
LW420x145

Material	Reforced AS,ABS,ABS,PP
Color	Customized



LW420x149

Material	Reforced AS,ABS,ABS,PP
Color	Customized



LW420x149

Material	Reforced AS,ABS,ABS,PP
Color	Customized



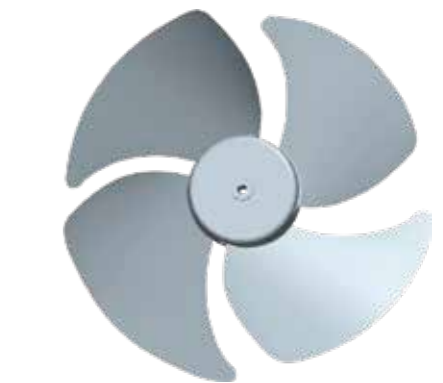
LW450x66

Material	Reforced AS,ABS,ABS,PP
Color	Customized



LW450x155

Material	Reforced AS,ABS,ABS,PP
Color	Customized



LW450x155-4

Operating Direction	C.C.W
Mounting Hole	Φ12-10



LW450x163

Material	Reforced AS,ABS,ABS,PP
Color	Customized



LW453x147

Material	Reforced AS,ABS,ABS,PP
Color	Customized



LW453x147

Material	Reforced AS,ABS,ABS,PP
Color	Customized



LW460x180

Material	Reforced AS,ABS,ABS,PP
Color	Customized



LW482x150

Material	Reforced AS,ABS,ABS,PP
Color	Customized



LW482x151-3

Operating Direction	C.C.W
Mounting Hole	Φ12-10



LW455x151-3

Operating Direction	C.W
Mounting Hole	Φ12-10



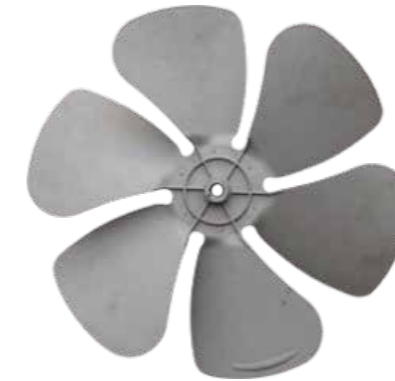
LW460x151

Material	Reforced AS,ABS,ABS,PP
Color	Customized



LW460x151

Material	Reforced AS,ABS,ABS,PP
Color	Customized



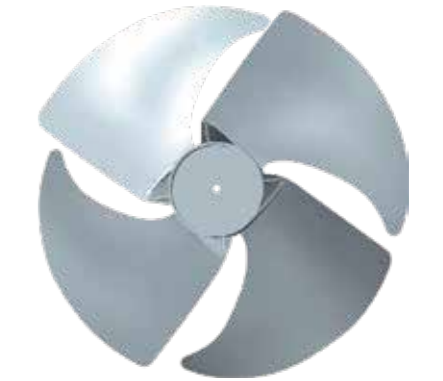
LW490x120

Material	Reforced AS,ABS,ABS,PP
Color	Customized



LW490x120

Material	Reforced AS,ABS,ABS,PP
Color	Customized



LW490x143.5-4

Operating Direction	C.W
Mounting Hole	Φ12.7-11.6



LW460x152-4

Operating Direction	C.C.W
Mounting Hole	Φ12-10



LW460x170

Material	Reforced AS,ABS,ABS,PP
Color	Customized



LW460x170

Material	Reforced AS,ABS,ABS,PP
Color	Customized



LW490x190

Material	Reforced AS,ABS,ABS,PP
Color	Customized



LW493x143

Material	Reforced AS,ABS,ABS,PP
Color	Customized



LW493x143

Material	Reforced AS,ABS,ABS,PP
Color	Customized



LW496x139-3

Operating Direction	C.W
Mounting Hole	Φ12-10



LW500x85

Material	Reforced AS,ABS,ABS,PP
Color	Customized



LW520x140-3

Operating Direction	C.W
Mounting Hole	Φ12-10



LW556x170

Material	Reforced AS,ABS,ABS,PP
Color	Customized



LW556x170

Material	Reforced AS,ABS,ABS,PP
Color	Customized



LW528x125

Material	Reforced AS,ABS,ABS,PP
Color	Customized



LW536x154-3

Operating Direction	C.W
Mounting Hole	Φ12-10



LW550x124-3

Operating Direction	C.W
Mounting Hole	Φ12-10



LW550x125

Material	Reforced AS,ABS,ABS,PP
Color	Customized



LW550x179

Material	Reforced AS,ABS,ABS,PP
Color	Customized



LW556x170

Material	Reforced AS,ABS,ABS,PP
Color	Customized

Model	Outer Diameter (mm)	Height (mm)	Shaft sleeve ID (mm)	Blades-Qty	Rotation (CW/CCW)
LW205×40	205	40	/	4	/
LW290×72	290	72	External rotor	5	C.C.W
LW290×90	290	90	/	4	/
LW300×65	300	65	12	5	/
LW310×90	310	90	/	6	/
LW320×65	320	65	8	3	C.C.W
LW320×130	320	130	8	3	C.C.W
LW320×132	320	132	/	/	/
LW320×140	320	140	8	3	/
LW320×142	320	142	/	3	/
LW325×137	325	137	8-12	3	/
LW325×137	450	137	/	3	/
LW350×95	350	95	/	5	/
LW350×130	350	130	8-12	4	/
LW375×125	375	125	8	4	C.C.W
LW375×125	375	125	/	4	/
LW375×125	375	125	/	4	/
LW380×130	380	130	/	3	/
LW380×130	380	130	/	3	/
LW385×116	385	116	8-12	5	/

Model	Outer Diameter (mm)	Height (mm)	Shaft sleeve ID (mm)	Blades-Qty	Rotation (CW/CCW)
LW385×116	385	116	/	5	/
LW388×75	388	75	/	6	/
LW388×75	388	75	12/12.7	5	C.W
LW390×140	390	140	/	4	/
LW398×85	398	85	12/12.7	5	C.C.W
LW398×98	398	98	12/12.7	5	C.W
LW398×98	420	80	/	5	/
LW400×115	400	115	/	5	/
LW400×122	400	122	8-12	4	/
LW405×129	405	129	8-12	3	/
LW405×129	405	129	/	/	/
LW408×115	408	115	8	3	/
LW408×132	408	132	8-12	3	/
LW408×132	408	132	/	3	/
LW408×138	408	138	12	3	/
LW415×125	415	125	8-12	4	/
LW415×125	415	125	/	3	/
LW418×130	418	130	/	4	/
LW420×80	420	80	12	6	C.W
LW420×140	420	140	6	4	/
LW420×145	420	145	14	3	C.C.W
LW420×149	420	149	8-12	4	/
LW420×149	420	149	/	4	/
LW420×155	420	155	12	4	C.W
LW420×155	420	155	/	4	/
LW440×150	440	150	/	4	/
LW440×150	440	150	8-12	4	/
LW450×66	450	66	/	5	/
LW450×155	450	155	12	4	/
LW453×147	453	147	8-12	4	/
LW450×163	450	183	/	3	/

Model	Outer Diameter (mm)	Height (mm)	Shaft sleeve ID (mm)	Blades-Qty	Rotation (CW/CCW)
LW453×147	453	147	/	4	/
LW460×170	460	170	/	3	/
LW460×170	560	170	8-12	3	/
LW460×151	460	151	12	3	C.W
LW460×151	460	151	/	3	/
LW460×180	460	180	12	3	/
LW482×150	482	482	8-12	3	/
LW490×120	490	120	/	6	/
LW490×120	490	590	8-12	6	/
LW490×190	490	190	/	4	/
LW493×143	493	143	/	3	/
LW493×143	493	143	/	4	/
LW500×85	500	85	14	5	/
LW528×125	528	128	/	/	/
LW550×125	550	125	/	/	/
LW550×179	550	170	14	4	C.C.W
LW556×170	556	170	/	4	/
LW556×170	556	556	8-12	4	/
LW556×170-2	556	170	/	4	/

Centrifugal Fan Impellers(Plastic)

Professional HVAC Fan & Motors Manufacturer



LW65x110

Forward Dual-inlet Centrifugal fans	
Operating Direction	C.W
Mounting Hole	Φ8-7
Installation of Motor	—



LW76x117.5

Forward Dual-inlet Centrifugal fans	
Operating Direction	C.C.W
Mounting Hole	Φ6-5
Installation of Motor	—



LW77x46

Material	ABS+GF
Axle hole	Φ3mm
Height	46mm
Weight	27g



LW84x90

Forward Dual-inlet Centrifugal fans	
Operating Direction	C.C.W
Mounting Hole	Φ6-5
Installation of Motor	—



LW84x138

Forward Dual-inlet Centrifugal fans	
Operating Direction	C.C.W
Mounting Hole	Φ6-5
Installation of Motor	—



LW88x49

Material	ABS+GF
Axle hole	Φ4mm
Height	49mm
Weight	33g



LW88x55

Material	ABS+GF
Axle hole	Φ8mm
Height	55mm
Weight	40g



LW88.5x85

Forward Dual-inlet Centrifugal fans	
Operating Direction	C.W
Mounting Hole	Φ6-5
Installation of Motor	—



LW92x96

Material	ABS+GF
Axle hole	Φ6mm
Height	96mm
Weight	68g





LW92x96

Forward Dual-inlet Centrifugal fans	
Operating Direction	C.W
Mounting Hole	Φ6
Installation of Motor	—



LW92x116

Material	ABS+GF
Axle hole	Φ8mm
Height	116mm
Weight	80g



LW95x45

Material	ABS+GF
Axle hole	Φ4mm
Height	45mm
Weight	54g



LW110x47

Material	ABS+GF
Axle hole	Φ4mm
Height	47mm
Weight	63g



LW112x55

Material	ABS+GF
Axle hole	Φ8mm
Height	55mm
Weight	70g



LW113x60

Forward Dual-inlet Centrifugal fans	
Operating Direction	C.W
Mounting Hole	Φ6-5
Installation of Motor	—



LW103x65

Forward single-inlet Centrifugal fans	
Operating Direction	C.C.W
Mounting Hole	Φ6-5
Installation of Motor	Bottom insert



LW103x65(With housing)

Forward single-inlet Centrifugal fans	
Operating Direction	C.W
Mounting Hole	Φ6-5
Installation of Motor	Bottom insert



LW105x40(With housing)

Forward single-inlet Centrifugal fans	
Operating Direction	C.W
Mounting Hole	Φ6-4.55
Installation of Motor	Bottom insert



LW114x80(With housing)

Forward single-inlet Centrifugal fans	
Operating Direction	C.W
Mounting Hole	Φ6-4.55
Installation of Motor	—



LW114x80(With housing)

Forward single-inlet Centrifugal fans	
Operating Direction	C.C.W
Mounting Hole	Φ6-4.55
Installation of Motor	—



LW115x51.5-1

Backward centrifugal fan	
Operating Direction	C.W
Mounting Hole	Φ6
Installation of Motor	Bottom insert



LW105x40(With housing)

Forward single-inlet Centrifugal fans	
Operating Direction	C.C.W
Mounting Hole	Φ6-4.55
Installation of Motor	Bottom insert



LW105x40

Material	ABS+GF
Axle hole	Φ4-6mm
Height	40mm
Weight	37g



LW105x89

Material	ABS+GF
Axle hole	Φ8mm
Height	89mm
Weight	90g



LW115x51.5-2

Backward centrifugal fan	
Operating Direction	C.C.W
Mounting Hole	Φ6
Installation of Motor	Bottom insert



LW120x45

Material	ABS+GF
Axle hole	Φ4mm
Height	45mm
Weight	45g



LW120x47

Material	ABS+GF
Axle hole	Φ6mm
Height	47mm
Weight	68g



LW120x47

Backward centrifugal fan	
Operating Direction	C.W
Mounting Hole	Φ6-5
Installation of Motor	Bottom insert



LW121x62

Material	ABS+GF
Axle hole	Φ8mm
Height	62mm
Weight	60g



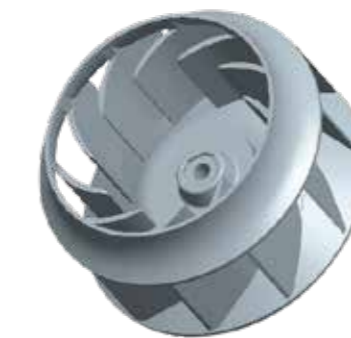
LW121x63

Forward single-inlet Centrifugal fans	
Operating Direction	C.C.W
Mounting Hole	Φ8-6
Installation of Motor	Bottom insert



LW130x82

Material	ABS+GF
Axle hole	Φ8-7mm
Height	82mm
Weight	185g



LW133x70

Backward centrifugal fan	
Operating Direction	C.C.W
Mounting Hole	Φ8
Installation of Motor	Bottom insert



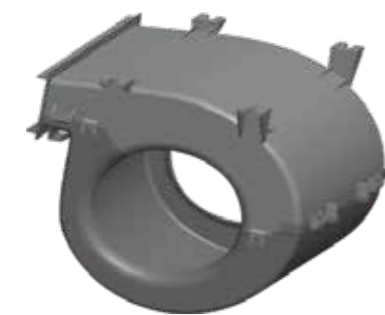
LW133x95

Forward Dual-inlet Centrifugal fans	
Operating Direction	C.C.W
Mounting Hole	Φ8
Installation of Motor	—



LW121x63

Forward single-inlet Centrifugal fans	
Operating Direction	C.W
Mounting Hole	Φ8-6
Installation of Motor	Bottom insert



LW121x131

Material	ABS+GF
Axle hole	/
Height	/
Weight	210g



LW121x131

Material	ABS+GF
Axle hole	Φ10mm
Height	131mm
Weight	125g



LW135x47

Forward Dual-inlet Centrifugal fans	
Operating Direction	C.C.W
Mounting Hole	Φ4-3
Installation of Motor	Bottom insert



LW135x47

Material	ABS+GF
Axle hole	Φ4mm
Height	47mm
Weight	38g



LW135x60

Forward centrifugal fan	
Operating Direction	C.W
Mounting Hole	Φ8-6
Installation of Motor	Bottom insert



LW124x90

Forward single-inlet Centrifugal fans	
Operating Direction	C.W
Mounting Hole	Φ8-6
Installation of Motor	Bottom insert



LW125x25

Material	ABS+GF
Axle hole	Φ3mm
Height	29mm
Weight	45g



LW129x42

Material	ABS+GF
Axle hole	Φ4mm
Height	42mm
Weight	56g



LW135x94

Bilateral proclinus centrifugality	
Operating Direction	C.W
Mounting Hole	Φ8
Installation of Motor	—



LW136x47

Material	ABS+GF
Axle hole	Φ8mm
Height	47mm
Weight	80g



LW136x47

Material	ABS+GF
Axle hole	Φ6mm
Height	47mm
Weight	80g



LW137x65

Material	ABS+GF
Axle hole	Φ8-7mm
Height	63mm
Weight	95g



LW139x47

Material	ABS+GF
Axle hole	Φ6mm
Height	82mm
Weight	47g



LW140x47

Backward centrifugal fan	
Operating Direction	C.W
Mounting Hole	Φ6-5
Installation of Motor	Bottom insert



LW140x190

Material	ABS+GF
Axle hole	Φ12mm
Height	230mm
Weight	280g



LW142x65

Material	ABS+GF
Axle hole	Φ8-6.5mm
Height	65mm
Weight	105g



LW143x45

Material	ABS+GF
Axle hole	Φ6mm
Height	106mm
Weight	45g



LW140x63-Right

Material	ABS+GF
Axle hole	Φ8mm
Height	63mm
Weight	111g



LW140x63-Left

Material	ABS+GF
Axle hole	Φ8mm
Height	63mm
Weight	111g



LW140x70

Forward centrifugal fan	
Operating Direction	C.C.W
Mounting Hole	Φ8-6
Installation of Motor	Bottom insert



LW143x80

Material	ABS+GF
Axle hole	Φ8mm
Height	80mm
Weight	130g



LW144x160

Forward Dual-inlet Centrifugal fans	
Operating Direction	C.W
Mounting Hole	Φ8
Installation of Motor	—



LW145x90

Forward Dual-inlet Centrifugal fans	
Operating Direction	C.C.W
Mounting Hole	Φ8-7
Installation of Motor	—



LW140x95

Material	ABS+GF
Axle hole	Φ8mm
Height	95mm
Weight	168g



LW140x95

Material	ABS+GF
Axle hole	Φ8mm
Height	95mm
Weight	188g



LW140x190

Material	ABS+GF
Axle hole	Φ12mm
Height	190mm
Weight	280g



LW145x130

Forward Dual-inlet Centrifugal fans	
Operating Direction	C.W
Mounting Hole	Φ8
Installation of Motor	—



LW145x132

Material	ABS+GF
Axle hole	Φ5mm
Height	132mm
Weight	145g



LW147x80

Forward Dual-inlet Centrifugal fans	
Operating Direction	C.C.W
Mounting Hole	Φ8-7
Installation of Motor	—



LW147x90

Forward Dual-inlet Centrifugal fans	
Operating Direction	C.C.W
Mounting Hole	Φ8
Installation of Motor	—



LW150x47

Backward centrifugal fan	
Operating Direction	C.W
Mounting Hole	Φ6-5
Installation of Motor	Bottom insert



LW150x50

Forward centrifugal fan	
Operating Direction	C.W
Mounting Hole	Φ6-5
Installation of Motor	Insert from air-inlet



LW153x140

Forward Dual-inlet Centrifugal fans	
Operating Direction	C.W
Mounting Hole	Φ8-7
Installation of Motor	—



LW155x65

Material	ABS+GF
Axle hole	Φ8mm
Height	65mm
Weight	125g



LW155x79

Material	ABS+GF
Axle hole	Φ8mm
Height	79mm
Weight	160g



LW150x79

Backward centrifugal fan	
Operating Direction	C.W
Mounting Hole	Φ8
Installation of Motor	Bottom insert



LW150x81

Material	ABS+GF
Axle hole	Φ6mm
Height	81mm
Weight	143g



LW151x50

Forward single-inlet Centrifugal fans	
Operating Direction	C.W
Mounting Hole	Φ6-4.55
Installation of Motor	Insert from air-inlet



LW155x79

Material	ABS+GF
Axle hole	Φ8mm
Height	79mm
Weight	168g



LW155x79

Material	ABS+GF
Axle hole	Φ8mm
Height	79mm
Weight	168g



LW155x80

Forward Dual-inlet Centrifugal fans	
Operating Direction	C.W
Mounting Hole	Φ8
Installation of Motor	—



LW152x70

Forward Dual-inlet Centrifugal fans	
Operating Direction	C.W
Mounting Hole	Φ8
Installation of Motor	—



LW152x80

Material	ABS+GF
Axle hole	Φ8mm
Height	80mm
Weight	128g



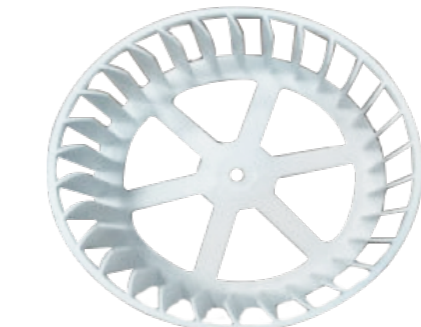
LW153x139

Material	ABS+GF
Axle hole	Φ8-7mm
Height	139mm
Weight	180g



LW155x120

Material	ABS+GF
Axle hole	Φ8mm
Height	214mm
Weight	120g



LW156x55

Material	ABS+GF
Axle hole	Φ5mm
Height	55mm
Weight	50g



LW156x91

Forward single-inlet Centrifugal fans	
Operating Direction	C.W
Mounting Hole	Φ8
Installation of Motor	Bottom insert



LW156x92.5

Forward single-inlet Centrifugal fans	
Operating Direction	C.C.W
Mounting Hole	Φ8-7.5
Installation of Motor	Bottom insert



LW156x120

Forward Dual-inlet Centrifugal fans	
Operating Direction	C.W
Mounting Hole	Φ8-7
Installation of Motor	—



LW158x78

Backward centrifugal fan	
Operating Direction	C.W
Mounting Hole	Φ8-6
Installation of Motor	Bottom insert



LW164x46.5

Material	ABS+GF
Axle hole	Φ6mm
Height	46.5mm
Weight	131



LW164x55

Material	ABS+GF
Axle hole	Φ8-7mm
Height	55mm
Weight	120g



LW165x47

Forward single-inlet Centrifugal fans	
Operating Direction	C.W
Mounting Hole	Φ8-6
Installation of Motor	Insert from air-inlet



LW160x59

Material	ABS+GF
Axle hole	Φ8mm
Height	59mm
Weight	145g



LW160x76

Backward centrifugal fan	
Operating Direction	C.C.W
Mounting Hole	Φ8
Installation of Motor	Bottom insert



LW160x130

Forward Dual-inlet Centrifugal fans	
Operating Direction	C.C.W
Mounting Hole	Φ8-7
Installation of Motor	—



LW165x57

Forward single-inlet Centrifugal fans	
Operating Direction	C.W
Mounting Hole	Φ8-6
Installation of Motor	Insert from air-inlet



LW165x65.5

Backward centrifugal fan	
Operating Direction	C.W
Mounting Hole	Φ8-6
Installation of Motor	Bottom insert



LW165x90

Backward centrifugal fan	
Operating Direction	C.W
Mounting Hole	Φ8
Installation of Motor	Bottom insert



LW160x140

Forward Dual-inlet Centrifugal fans	
Operating Direction	C.C.W
Mounting Hole	Φ8-7
Installation of Motor	—



LW161x60

Forward single-inlet Centrifugal fans	
Operating Direction	C.C.W
Mounting Hole	Φ8-6.5
Installation of Motor	Bottom insert



LW163x55

Material	ABS+GF
Axle hole	Φ8mm
Height	55mm
Weight	90g



LW165x135

Forward Dual-inlet Centrifugal fans	
Operating Direction	C.C.W
Mounting Hole	Φ8-7
Installation of Motor	—



LW166x80

Forward single-inlet Centrifugal fans	
Operating Direction	C.W
Mounting Hole	Φ8-6
Installation of Motor	Bottom insert



LW168x170

Forward Dual-inlet Centrifugal fans	
Operating Direction	C.C.W
Mounting Hole	Φ10-8
Installation of Motor	—



LW170x28

Material	ABS+GF
Axle hole	Φ35mm
Height	28mm
Weight	80g



LW170x76

Backward centrifugal fan	
Operating Direction	C.W
Mounting Hole	Φ8-6.5
Installation of Motor	Bottom insert



LW170x120

Material	ABS+GF
Axle hole	Φ8mm
Height	120mm
Weight	230g



LW174x105

Material	ABS+GF
Axle hole	Φ12mm
Height	105mm
Weight	260g



LW174x105

Material	ABS+GF
Axle hole	Φ12mm
Height	105mm
Weight	230g



LW174x158

Forward Dual-inlet Centrifugal fans	
Operating Direction	C.C.W
Mounting Hole	Φ8-7
Installation of Motor	—



LW170x131.5

Forward Dual-inlet Centrifugal fans	
Operating Direction	C.C.W
Mounting Hole	Φ8-7
Installation of Motor	—



LW171x60

Forward single-inlet Centrifugal fans	
Operating Direction	C.C.W
Mounting Hole	Φ8-6.5
Installation of Motor	Bottom insert



LW172x81

Material	ABS+GF
Axle hole	Φ8mm
Height	81mm
Weight	180g



LW175x82

Material	ABS+GF
Axle hole	Φ8-6.5mm
Height	82mm
Weight	177g



LW175x142

Forward Dual-inlet Centrifugal fans	
Operating Direction	C.W
Mounting Hole	Φ10
Installation of Motor	—



LW175x142

Forward Dual-inlet Centrifugal fans	
Operating Direction	C.C.W
Mounting Hole	Φ8-7
Installation of Motor	—



LW172x126

Forward single-inlet Centrifugal fans	
Operating Direction	C.C.W
Mounting Hole	Φ8-7
Installation of Motor	Bottom insert



LW174x80

Material	ABS+GF
Axle hole	Φ12mm
Height	80mm
Weight	210g



LW174x80

Material	ABS+GF
Axle hole	Φ5mm
Height	80mm
Weight	145g



LW175.5x82

Backward centrifugal fan	
Operating Direction	C.W
Mounting Hole	Φ8-6.55
Installation of Motor	Bottom insert



LW175.5x82

Backward centrifugal fan	
Operating Direction	C.W
Mounting Hole	Φ8-6.55
Installation of Motor	Bottom insert



LW178x88

Backward centrifugal fan	
Operating Direction	C.W
Mounting Hole	Φ8-7
Installation of Motor	Bottom insert



LW180x43-9

Backward centrifugal fan	
Operating Direction	C.W
Mounting Hole	Φ8-7
Installation of Motor	Bottom insert



LW180x52-28

Forward single-inlet Centrifugal fans	
Operating Direction	C.C.W
Mounting Hole	Φ6-4.55
Installation of Motor	—



LW180x52-56

Forward single-inlet Centrifugal fans	
Operating Direction	C.C.W
Mounting Hole	Φ8-7
Installation of Motor	Bottom insert



LW182x79(With housing)

Forward single-inlet Centrifugal fans	
Operating Direction	C.C.W
Mounting Hole	Φ8
Installation of Motor	Bottom insert



LW184x126

Forward Dual-inlet Centrifugal fans	
Operating Direction	C.C.W
Mounting Hole	Φ8-6.5
Installation of Motor	—



LW187x89

Forward single-inlet Centrifugal fans	
Operating Direction	C.W
Mounting Hole	Φ6-5
Installation of Motor	Bottom insert



LW180x52-57

Forward single-inlet Centrifugal fans	
Operating Direction	C.C.W
Mounting Hole	Φ8-6.5
Installation of Motor	Insert from air-inlet



LW180x70

Forward single-inlet Centrifugal fans	
Operating Direction	C.C.W
Mounting Hole	Φ8
Installation of Motor	Bottom insert



LW180x78

Material	ABS+GF
Axle hole	Φ8/6.5mm
Height	78mm
Weight	205g



LW188x85

Forward single-inlet Centrifugal fans	
Operating Direction	C.C.W
Mounting Hole	Φ8
Installation of Motor	Bottom insert



LW189x75

Material	ABS+GF+Plastic
Axle hole	Φ8mm
Height	75mm
Weight	160



LW189x75-45

Forward single-inlet Centrifugal fans	
Operating Direction	C.C.W
Mounting Hole	Φ8
Installation of Motor	Bottom insert



LW180x100

Forward Dual-inlet Centrifugal fans	
Operating Direction	C.W
Mounting Hole	Φ8
Installation of Motor	—



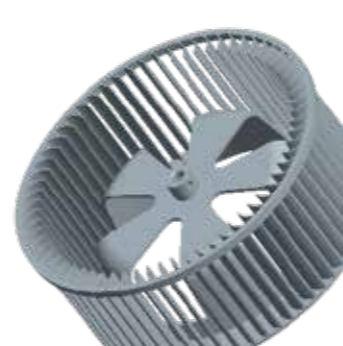
LW182x64

Forward single-inlet Centrifugal fans	
Operating Direction	C.C.W
Mounting Hole	Φ8-6.5
Installation of Motor	Insert from air-inlet



LW182x64

Material	ABS+GF
Axle hole	Φ8mm
Height	64mm
Weight	145



LW189x75-66

Forward single-inlet Centrifugal fans	
Operating Direction	C.C.W
Mounting Hole	Φ8
Installation of Motor	Bottom insert



LW189x78

Forward single-inlet Centrifugal fans	
Operating Direction	C.C.W
Mounting Hole	Φ8
Installation of Motor	Bottom insert



LW189x100-45

Forward single-inlet Centrifugal fans	
Operating Direction	C.C.W
Mounting Hole	Φ8
Installation of Motor	Bottom insert



LW189x100-66

Forward single-inlet Centrifugal fans	
Operating Direction	C.C.W
Mounting Hole	Φ8
Installation of Motor	Bottom insert



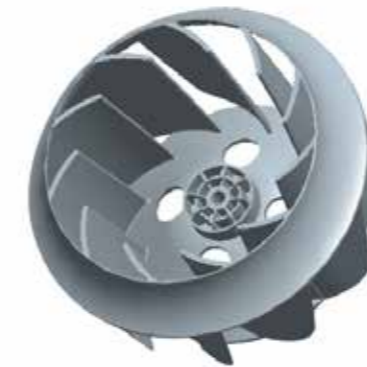
LW190x65(With housing)

Forward Dual-inlet Centrifugal fans	
Operating Direction	C.C.W
Mounting Hole	Φ8
Installation of Motor	—



LW190x75

Material	ABS+GF
Axle hole	Φ8mm
Height	75mm
Weight	230



LW192x105

Backward centrifugal fan	
Operating Direction	C.W
Mounting Hole	Φ8
Installation of Motor	Bottom insert



LW193x60

Material	ABS+GF
Axle hole	Φ8mm
Height	60mm
Weight	151g



LW193x60

Forward single-inlet Centrifugal fans	
Operating Direction	C.W
Mounting Hole	Φ8-7
Installation of Motor	Bottom insert



LW190x78

Material	ABS+GF
Axle hole	Φ8mm
Height	214mm
Weight	78g



LW190x78

Material	ABS+GF
Axle hole	Φ8mm
Height	78.5mm
Weight	245g



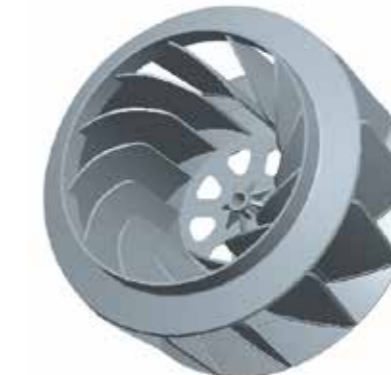
LW190x80

Forward single-inlet Centrifugal fans	
Operating Direction	C.W
Mounting Hole	Φ8-7
Installation of Motor	Bottom insert



LW193x65

Forward single-inlet Centrifugal fans	
Operating Direction	C.W
Mounting Hole	Φ8-7
Installation of Motor	Bottom insert



LW193x100

Backward centrifugal fan	
Operating Direction	C.W
Mounting Hole	Φ8
Installation of Motor	Bottom insert



LW195x70

Material	ABS+GF
Axle hole	Φ8mm
Height	70mm
Weight	230g



LW190x125

Backward centrifugal fan	
Operating Direction	C.C.W
Mounting Hole	Φ8-6
Installation of Motor	Bottom insert



LW190x145

Material	Reforced AS,ABS,ABS,PP
Color	Customized



LW191x60

Forward single-inlet Centrifugal fans	
Operating Direction	C.C.W
Mounting Hole	Φ8
Installation of Motor	Bottom insert



LW195x83

Forward single-inlet Centrifugal fans	
Operating Direction	C.C.W
Mounting Hole	Φ8
Installation of Motor	Bottom insert



LW195x84

Material	ABS+GF
Axle hole	Φ8mm
Height	84mm
Weight	364g



LW195x87

Material	ABS+GF
Axle hole	Φ8mm
Height	87mm
Weight	285g



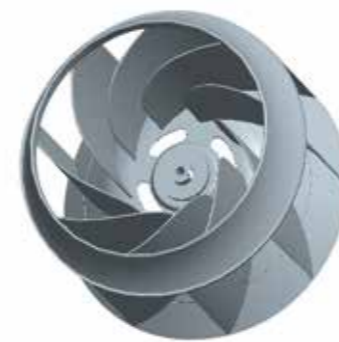
LW195x87

Forward single-inlet Centrifugal fans	
Operating Direction	C.C.W
Mounting Hole	Φ8
Installation of Motor	Bottom insert



LW197x60

Material	ABS+GF
Axle hole	Φ8mm
Height	60mm
Weight	238g



LW197x130

Backward centrifugal fan	
Operating Direction	C.C.W
Mounting Hole	Φ6
Installation of Motor	Bottom insert



LW200x81

Material	ABS+GF
Axle hole	Φ12.7mm
Height	81mm
Weight	330g



LW200x82

Material	ABS+GF
Axle hole	Φ8mm
Height	82mm
Weight	280g



LW200x120

Backward centrifugal fan	
Operating Direction	C.C.W
Mounting Hole	Φ8
Installation of Motor	Bottom insert



LW199x80

Forward single-inlet Centrifugal fans	
Operating Direction	C.W
Mounting Hole	Φ6
Installation of Motor	Insert from air-inlet



LW200x43.5

Material	ABS+GF
Axle hole	Φ8mm
Height	43.5mm
Weight	180g



LW200x49

Material	Reforced AS,ABS,ABS,PP
Color	Customized



LW200x140

Forward Dual-inlet Centrifugal fans	
Operating Direction	C.C.W
Mounting Hole	Φ8
Installation of Motor	—



LW203x95

Material	ABS+GF
Axle hole	Φ8-6.5mm
Height	95mm
Weight	280g



LW203x95

Backward centrifugal fan	
Operating Direction	C.W
Mounting Hole	Φ8
Installation of Motor	Bottom insert



LW200x57

Material	Reforced AS,ABS,ABS,PP
Color	Customized



LW200x65(With housing)

Forward Dual-inlet Centrifugal fans	
Operating Direction	C.C.W
Mounting Hole	Φ8
Installation of Motor	—



LW200x66(With housing)

Forward Dual-inlet Centrifugal fans	
Operating Direction	C.C.W
Mounting Hole	Φ8
Installation of Motor	—



LW204x67

Forward single-inlet Centrifugal fans	
Operating Direction	C.W
Mounting Hole	Φ8
Installation of Motor	Bottom insert



LW204x180

Material	ABS+GF
Axle hole	Φ8mm
Height	180mm
Weight	565g



LW205x56

Forward single-inlet Centrifugal fans	
Operating Direction	C.C.W
Mounting Hole	Φ8-6
Installation of Motor	Insert from air-inlet



LW205x60

Forward single-inlet Centrifugal fans	
Operating Direction	C.W
Mounting Hole	Φ8-6
Installation of Motor	Insert from air-inlet



LW205x172

Forward Dual-inlet Centrifugal fans	
Operating Direction	C.W
Mounting Hole	Φ8
Installation of Motor	—



LW206x53

Forward single-inlet Centrifugal fans	
Operating Direction	C.C.W
Mounting Hole	Φ8
Installation of Motor	Insert from air-inlet



LW207x96

Forward single-inlet Centrifugal fans	
Operating Direction	C.C.W
Mounting Hole	Φ8
Installation of Motor	Bottom insert



LW208x81.8

Material	ABS+GF
Axle hole	Φ8mm
Height	81.8mm
Weight	265g



LW208x81.8

Material	ABS+GF
Axle hole	Φ8mm
Height	81.8mm
Weight	269g



LW206x56

Material	ABS+GF
Axle hole	Φ8mm
Height	56mm
Weight	230



LW206x56B

Material	ABS+GF
Axle hole	Φ8mm
Height	56mm
Weight	225



LW206x60

Material	ABS+GF
Axle hole	Φ8mm
Height	60mm
Weight	190g



LW208x87

Material	ABS+GF
Axle hole	Φ8mm
Height	87mm
Weight	280



LW208x122

Forward Dual-inlet Centrifugal fans	
Operating Direction	C.C.W
Mounting Hole	Φ6-4.55
Installation of Motor	—



LW209x58

Forward Dual-inlet Centrifugal fans	
Operating Direction	C.C.W
Mounting Hole	Φ6
Installation of Motor	—



LW206x60

Material	ABS+GF
Axle hole	Φ8mm
Height	60mm
Weight	130g



LW206x135

Material	ABS+GF
Axle hole	/
Height	/
Weight	435g



LW206x135

Material	ABS+GF
Axle hole	Φ8mm
Height	135mm
Weight	360g



LW209x87

Forward single-inlet Centrifugal fans	
Operating Direction	C.W
Mounting Hole	Φ8
Installation of Motor	Bottom insert



LW210x50

Material	Reforced AS,ABS,ABS,PP
Color	Customized



LW210x78

Forward Dual-inlet Centrifugal fans	
Operating Direction	C.C.W
Mounting Hole	Φ6
Installation of Motor	—



LW210x80

Forward single-inlet Centrifugal fans	
Operating Direction	C.W
Mounting Hole	Φ6
Installation of Motor	Insert from air-inlet



LW212x190

Forward Dual-inlet Centrifugal fans	
Operating Direction	C.C.W
Mounting Hole	Φ8
Installation of Motor	—



LW214x100

Backward centrifugal fan	
Operating Direction	C.C.W
Mounting Hole	Φ6
Installation of Motor	Bottom insert



LW216x66

Forward single-inlet Centrifugal fans	
Operating Direction	C.W
Mounting Hole	Φ8-6
Installation of Motor	Insert from air-inlet



LW216x95

Forward single-inlet Centrifugal fans	
Operating Direction	C.W
Mounting Hole	Φ8-7
Installation of Motor	Bottom insert



LW216x100

Forward single-inlet Centrifugal fans	
Operating Direction	C.W
Mounting Hole	Φ12-10
Installation of Motor	Bottom insert



LW214x112

Material	ABS+GF
Axle hole	Φ6mm
Height	112mm
Weight	420



LW214x112

Backward centrifugal fan	
Operating Direction	C.C.W
Mounting Hole	Φ6-5
Installation of Motor	Bottom insert



LW215x95

Forward single-inlet Centrifugal fans	
Operating Direction	C.W
Mounting Hole	Φ8
Installation of Motor	Bottom insert



LW216x114

Backward centrifugal fan	
Operating Direction	C.C.W
Mounting Hole	Φ8
Installation of Motor	Bottom insert



LW217x56

Forward single-inlet Centrifugal fans	
Operating Direction	C.W
Mounting Hole	Φ6
Installation of Motor	Insert from air-inlet



LW217x56

Material	ABS+GF
Axle hole	Φ8mm
Height	56mm
Weight	181g



LW215x107

Material	ABS+GF
Axle hole	Φ12mm
Height	107mm
Weight	346g



LW215x110.5

Forward single-inlet Centrifugal fans	
Operating Direction	C.C.W
Mounting Hole	Φ8-7
Installation of Motor	Bottom insert



LW215x126

Backward centrifugal fan	
Operating Direction	C.C.W
Mounting Hole	Φ6
Installation of Motor	Bottom insert



LW217x96

Material	ABS+GF
Axle hole	Φ8mm
Height	96mm
Weight	330



LW218x84

Forward single-inlet Centrifugal fans	
Operating Direction	C.C.W
Mounting Hole	Φ8
Installation of Motor	Bottom insert



LW218x84

Forward single-inlet Centrifugal fans	
Operating Direction	C.C.W
Mounting Hole	Φ8
Installation of Motor	Bottom insert



LW219x93

Forward single-inlet Centrifugal fans	
Operating Direction	C.C.W
Mounting Hole	Φ12
Installation of Motor	Bottom insert



LW220x52

Forward single-inlet Centrifugal fans	
Operating Direction	C.C.W
Mounting Hole	Φ8-7
Installation of Motor	Bottom insert



LW220x56

Material	ABS+GF
Axle hole	Φ6mm
Height	56mm
Weight	195g



LW221.5x57.5

Forward single-inlet Centrifugal fans	
Operating Direction	C.W
Mounting Hole	Φ8-7
Installation of Motor	Bottom insert



LW221.5x84.5

Forward single-inlet Centrifugal fans	
Operating Direction	C.C.W
Mounting Hole	Φ8
Installation of Motor	Bottom insert



LW222x208

Forward Dual-inlet Centrifugal fans	
Operating Direction	C.C.W
Mounting Hole	Φ12
Installation of Motor	—



LW220x56

Forward single-inlet Centrifugal fans	
Operating Direction	C.C.W
Mounting Hole	Φ6-4.55
Installation of Motor	Bottom insert



LW220x72

Material	ABS+GF
Axle hole	Φ6mm
Height	72mm
Weight	230g



LW220x72

Forward single-inlet Centrifugal fans	
Operating Direction	C.C.W
Mounting Hole	Φ6-4.55
Installation of Motor	Insert from air-inlet



LW225x62

Forward single-inlet Centrifugal fans	
Operating Direction	C.C.W
Mounting Hole	Φ8-7
Installation of Motor	Bottom insert



LW225x74

Forward single-inlet Centrifugal fans	
Operating Direction	C.W
Mounting Hole	Φ8
Installation of Motor	Insert from air-inlet



LW225x90

Forward single-inlet Centrifugal fans	
Operating Direction	C.C.W
Mounting Hole	Φ8-7
Installation of Motor	Bottom insert



LW220x73

Forward single-inlet Centrifugal fans	
Operating Direction	C.C.W
Mounting Hole	Φ8-7
Installation of Motor	Bottom insert



LW220x75

Forward single-inlet Centrifugal fans	
Operating Direction	C.C.W
Mounting Hole	Φ6-4.55
Installation of Motor	Insert from air-inlet



LW220x130

Backward centrifugal fan	
Operating Direction	C.C.W
Mounting Hole	Φ6
Installation of Motor	Bottom insert



LW225x91

Backward centrifugal fan	
Operating Direction	C.C.W
Mounting Hole	Φ6
Installation of Motor	Bottom insert



LW225x91

Backward centrifugal fan	
Operating Direction	C.W
Mounting Hole	Φ6
Installation of Motor	Bottom insert



LW225x109

Forward single-inlet Centrifugal fans	
Operating Direction	C.W
Mounting Hole	Φ10-8
Installation of Motor	Bottom insert



LW225x109

Forward single-inlet Centrifugal fans	
Operating Direction	C.C.W
Mounting Hole	Φ10-8
Installation of Motor	Bottom insert



LW225x118

Backward centrifugal fan	
Operating Direction	C.C.W
Mounting Hole	Φ8
Installation of Motor	Bottom insert



LW226.5x95

Forward single-inlet Centrifugal fans	
Operating Direction	C.C.W
Mounting Hole	Φ8
Installation of Motor	Bottom insert



LW221.5x57.5

Forward single-inlet Centrifugal fans	
Operating Direction	C.W
Mounting Hole	Φ8-7
Installation of Motor	Bottom insert



LW221.5x84.5

Forward single-inlet Centrifugal fans	
Operating Direction	C.C.W
Mounting Hole	Φ8
Installation of Motor	Bottom insert



LW222x208

Forward Dual-inlet Centrifugal fans	
Operating Direction	C.C.W
Mounting Hole	Φ12
Installation of Motor	—



LW230x55

Forward single-inlet Centrifugal fans	
Operating Direction	C.W
Mounting Hole	Φ8-7
Installation of Motor	Bottom insert



LW230x70

Forward single-inlet Centrifugal fans	
Operating Direction	C.C.W
Mounting Hole	Φ8
Installation of Motor	Bottom insert



LW230x70

Material	ABS+GF
Axle hole	Φ8mm
Height	70mm
Weight	280g



LW225x62

Forward single-inlet Centrifugal fans	
Operating Direction	C.C.W
Mounting Hole	Φ8-7
Installation of Motor	Bottom insert



LW225x74

Forward single-inlet Centrifugal fans	
Operating Direction	C.W
Mounting Hole	Φ8
Installation of Motor	Insert from air-inlet



LW225x90

Forward single-inlet Centrifugal fans	
Operating Direction	C.C.W
Mounting Hole	Φ8-7
Installation of Motor	Bottom insert



LW230x90

Material	ABS+GF
Axle hole	Φ8mm
Height	90mm
Weight	320g



LW230x130

Material	ABS+GF
Axle hole	Φ6mm
Height	130mm
Weight	410g



LW231x78

Forward single-inlet Centrifugal fans	
Operating Direction	C.C.W
Mounting Hole	Φ8-7
Installation of Motor	Insert from air-inlet



LW225x91

Backward centrifugal fan	
Operating Direction	C.C.W
Mounting Hole	Φ6
Installation of Motor	Bottom insert



LW225x91

Backward centrifugal fan	
Operating Direction	C.W
Mounting Hole	Φ6
Installation of Motor	Bottom insert



LW225x109

Forward single-inlet Centrifugal fans	
Operating Direction	C.W
Mounting Hole	Φ10-8
Installation of Motor	Bottom insert



LW225x109

Forward single-inlet Centrifugal fans	
Operating Direction	C.C.W
Mounting Hole	Φ10-8
Installation of Motor	Bottom insert



LW225x118

Backward centrifugal fan	
Operating Direction	C.C.W
Mounting Hole	Φ8
Installation of Motor	Bottom insert



LW226.5x95

Forward single-inlet Centrifugal fans	
Operating Direction	C.C.W
Mounting Hole	Φ8
Installation of Motor	Bottom insert



LW231x78

Material	ABS+GF
Axle hole	Φ6mm
Height	282mm
Weight	78g



LW231x153.5

Forward Dual-inlet Centrifugal fans	
Operating Direction	C.W
Mounting Hole	Φ8-7
Installation of Motor	—



LW233x129

Material	ABS+GF
Axle hole	Φ6-6.5mm
Height	129mm
Weight	455g



LW230x55

Forward single-inlet Centrifugal fans	
Operating Direction	C.W
Mounting Hole	Φ8-7
Installation of Motor	Bottom insert



LW230x70

Forward single-inlet Centrifugal fans	
Operating Direction	C.C.W
Mounting Hole	Φ8
Installation of Motor	Bottom insert



LW230x70

Material	ABS+GF
Axle hole	Φ8mm
Height	70mm
Weight	280g



LW235x70

Material	Reforced AS,ABS,ABS,PP
Color	Customized



LW236x129

Backward centrifugal fan	
Operating Direction	C.W
Mounting Hole	Φ8
Installation of Motor	Bottom insert



LW237.5x77.5

Forward centrifugal fan	
Operating Direction	C.W
Mounting Hole	Φ8-7
Installation of Motor	Insert from air-inlet



LW230x90

Material	ABS+GF
Axle hole	Φ8mm
Height	90mm
Weight	320g



LW230x130

Material	ABS+GF
Axle hole	Φ6mm
Height	130mm
Weight	410g



LW231x78

Forward single-inlet Centrifugal fans	
Operating Direction	C.C.W
Mounting Hole	Φ8-7
Installation of Motor	Insert from air-inlet



LW238x48

Material	ABS+GF
Axle hole	Φ40mm
Height	48mm
Weight	112g



LW238x100

Forward single-inlet Centrifugal fans	
Operating Direction	C.W
Mounting Hole	Φ8-7
Installation of Motor	Bottom insert



LW238x110

Material	ABS+GF
Axle hole	Φ8mm
Height	110mm
Weight	500g



LW238x126

Forward Dual-inlet Centrifugal fans	
Operating Direction	C.W
Mounting Hole	Φ6-4.55
Installation of Motor	—



LW238.5x110

Forward single-inlet Centrifugal fans	
Operating Direction	C.C.W
Mounting Hole	Φ8
Installation of Motor	Bottom insert



LW239x110

Forward single-inlet Centrifugal fans	
Operating Direction	C.C.W
Mounting Hole	Φ8-7
Installation of Motor	Bottom insert



LW242x130

Forward Dual-inlet Centrifugal fans	
Operating Direction	C.C.W
Mounting Hole	Φ8-6
Installation of Motor	—



LW245x52

Material	ABS+GF
Axle hole	Φ12-1mm
Height	52mm
Weight	320g



LW245x70

Forward single-inlet Centrifugal fans	
Operating Direction	C.C.W
Mounting Hole	Φ8-7
Installation of Motor	Insert from air-inlet



LW240x60

Forward single-inlet Centrifugal fans	
Operating Direction	C.W
Mounting Hole	Φ8-7
Installation of Motor	Bottom insert



LW240x60-43

Forward single-inlet Centrifugal fans	
Operating Direction	C.C.W
Mounting Hole	Φ6-4.55
Installation of Motor	Insert from air-inlet



LW240x65

Material	ABS+GF
Axle hole	Φ8mm
Height	65mm
Weight	340g



LW245x95

Material	ABS+GF
Axle hole	Φ8mm
Height	95mm
Weight	320g



LW245x137

Forward Dual-inlet Centrifugal fans	
Operating Direction	C.C.W
Mounting Hole	Φ8-6-5
Installation of Motor	—



LW245x140

Material	ABS+GF
Axle hole	Φ8mm
Height	140mm
Weight	500g



LW240x70

Material	ABS+GF
Axle hole	Φ8mm
Height	70mm
Weight	230g



LW240x90(With housing)

Forward single-inlet Centrifugal fans	
Operating Direction	C.W
Mounting Hole	Φ8
Installation of Motor	Bottom insert



LW242x128

Forward Dual-inlet Centrifugal fans	
Operating Direction	C.C.W
Mounting Hole	Φ6-4.55
Installation of Motor	—



LW245x149

Backward centrifugal fan	
Operating Direction	C.C.W
Mounting Hole	Φ8-7
Installation of Motor	Bottom insert



LW246x64

Forward single-inlet Centrifugal fans	
Operating Direction	C.C.W
Mounting Hole	Φ8-7
Installation of Motor	Insert from air-inlet



LW246x78

Forward single-inlet Centrifugal fans	
Operating Direction	C.C.W
Mounting Hole	Φ8
Installation of Motor	Bottom insert



LW246x104

Forward single-inlet Centrifugal fans	
Operating Direction	C.C.W
Mounting Hole	Φ8
Installation of Motor	Insert from air-inlet



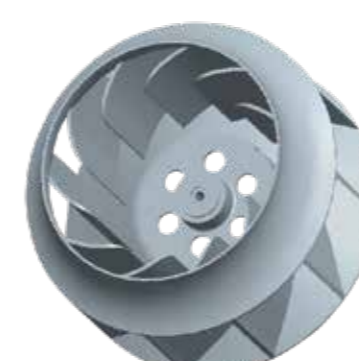
LW246x140

Forward Dual-inlet Centrifugal fans	
Operating Direction	C.C.W
Mounting Hole	Φ8-6
Installation of Motor	—



LW246x256

Forward Dual-inlet Centrifugal fans	
Operating Direction	C.W
Mounting Hole	Φ12
Installation of Motor	—



LW260x144.5

Backward centrifugal fan	
Operating Direction	C.C.W
Mounting Hole	Φ8
Installation of Motor	Bottom insert



LW265x70

Forward single-inlet Centrifugal fans	
Operating Direction	C.W
Mounting Hole	Φ8
Installation of Motor	Bottom insert



LW265x74

Forward single-inlet Centrifugal fans	
Operating Direction	C.W
Mounting Hole	Φ6-4.5
Installation of Motor	Insert from air-inlet



LW249x165

Backward centrifugal fan	
Operating Direction	C.C.W
Mounting Hole	Φ6
Installation of Motor	Bottom insert



LW250x150

Forward Dual-inlet Centrifugal fans	
Operating Direction	C.C.W
Mounting Hole	Φ8-7
Installation of Motor	—



LW255x66

Material	Reforced AS,ABS,ABS,PP
Color	Customized



LW265x80

Forward single-inlet Centrifugal fans	
Operating Direction	C.W
Mounting Hole	Φ8-6
Installation of Motor	Insert from air-inlet



LW265x80

Forward single-inlet Centrifugal fans	
Operating Direction	C.C.W
Mounting Hole	Φ8-7
Installation of Motor	Insert from air-inlet



LW266x70(With housing)

Forward single-inlet Centrifugal fans	
Operating Direction	C.W
Mounting Hole	Φ6-5
Installation of Motor	Bottom insert



LW260x68

Forward single-inlet Centrifugal fans	
Operating Direction	C.W
Mounting Hole	Φ12-10
Installation of Motor	Bottom insert



LW260x69

Forward single-inlet Centrifugal fans	
Operating Direction	C.C.W
Mounting Hole	Φ8-7
Installation of Motor	Bottom insert



LW260x72

Forward single-inlet Centrifugal fans	
Operating Direction	C.W
Mounting Hole	Φ6-4.55
Installation of Motor	Bottom insert



LW266x70

Forward single-inlet Centrifugal fans	
Operating Direction	C.W
Mounting Hole	Φ6-5
Installation of Motor	Bottom insert



LW272x70

Forward single-inlet Centrifugal fans	
Operating Direction	C.C.W
Mounting Hole	Φ12
Installation of Motor	Bottom insert



LW274x50.5

Forward single-inlet Centrifugal fans	
Operating Direction	C.C.W
Mounting Hole	Φ6-4.55
Installation of Motor	Insert from air-inlet



LW275x139

Material	ABS+GF
Axle hole	Φ8mm
Height	139mm
Weight	480g



LW276x60

Forward single-inlet Centrifugal fans	
Operating Direction	C.W
Mounting Hole	Φ6-4.55
Installation of Motor	Insert from air-inlet



LW276x74

Forward single-inlet Centrifugal fans	
Operating Direction	C.W
Mounting Hole	Φ6-4.55
Installation of Motor	Insert from air-inlet



LW284x128

Material	ABS+GF
Axle hole	Φ8mm
Height	128mm
Weight	560g



LW285x94

Forward single-inlet Centrifugal fans	
Operating Direction	C.W
Mounting Hole	Φ8-6.5
Installation of Motor	Insert from air-inlet



LW286x66(With housing)

Forward Dual-inlet Centrifugal fans	
Operating Direction	C.C.W
Mounting Hole	Φ10
Installation of Motor	—



LW276x74

Material	ABS+GF
Axle hole	Φ6mm
Height	74mm
Weight	320g



LW276x94

Material	ABS+GF
Axle hole	Φ8mm
Height	94mm
Weight	340g



LW276x146

Forward Dual-inlet Centrifugal fans	
Operating Direction	C.C.W
Mounting Hole	Φ8-7
Installation of Motor	—



Φ286x77

Forward single-inlet Centrifugal fans	
Operating Direction	C.W
Mounting Hole	Φ8-7
Installation of Motor	Insert from air-inlet



LW290x40

Material	ABS+GF
Axle hole	Φ8mm
Height	40mm
Weight	195g



LW290x53

Material	ABS+GF
Axle hole	Φ45mm
Height	53mm
Weight	221g



LW277x58

Forward single-inlet Centrifugal fans	
Operating Direction	C.W
Mounting Hole	Φ6-5
Installation of Motor	Insert from air-inlet



LW278x70

Forward single-inlet Centrifugal fans	
Operating Direction	C.C.W
Mounting Hole	Φ8
Installation of Motor	Insert from air-inlet



LW283x166

Material	Reforced AS,ABS,ABS,PP
Color	Customized



LW294x66

Forward single-inlet Centrifugal fans	
Operating Direction	C.W
Mounting Hole	Φ8-7
Installation of Motor	Insert from air-inlet



LW300x130

Forward single-inlet Centrifugal fans	
Operating Direction	C.C.W
Mounting Hole	Φ12
Installation of Motor	Bottom insert



LW300x130

Material	ABS+GF
Axle hole	Φ12mm
Height	130mm
Weight	980g



LW300x130

Material	Reforced AS,ABS,ABS,PP
Color	Customized



LW302x105

Forward single-inlet Centrifugal fans	
Operating Direction	C.C.W
Mounting Hole	Φ6-5
Installation of Motor	Bottom insert



LW325x140

Forward single-inlet Centrifugal fans	
Operating Direction	C.C.W
Mounting Hole	Φ12
Installation of Motor	Bottom insert



LW380x180

Material	Reforced AS,ABS,ABS,PP
Color	Customized



LW450x141

Material	Reforced AS,ABS,ABS,PP
Color	Customized



LW476x169.5

Material	Reforced AS,ABS,ABS,PP
Color	Customized



LW325x155

Material	Reforced AS,ABS,ABS,PP
Color	Customized



LW330x90

Forward single-inlet Centrifugal fans	
Operating Direction	C.C.W
Mounting Hole	Φ12
Installation of Motor	Bottom insert



LW350x125

Material	ABS+GF
Axle hole	Φ12mm
Height	125mm
Weight	2000g

Model	Outer diameter (mm)	Height (mm)	Shaft hole ID (mm)	Blades-Qty	Rotation (CW/CCW)
LW190x145	190	145	12	/	/
LW200x49	200	49	6	/	/
LW200x57	200	57	8	/	/
LW210x50	210	50	8	/	/
LW235x70	235	70	8	/	/
LW255x66	255	66	8	/	/
LW283x166	283	166	10	/	/
LW300x130	300	130	12	/	/
LW325x155	325	155	12	/	/
LW380x180	380	180	12	/	/
LW450x141	450	141	12	/	/
LW476x169.5	476	169.5	12	/	/



LW350x130

Forward single-inlet Centrifugal fans	
Operating Direction	C.C.W
Mounting Hole	Φ12
Installation of Motor	Bottom insert



LW370x80

Backward centrifugal fan	
Operating Direction	C.C.W
Mounting Hole	Φ8-7
Installation of Motor	Bottom insert



LW380x180

Forward single-inlet Centrifugal fans	
Operating Direction	C.C.W
Mounting Hole	Φ12
Installation of Motor	Bottom insert