

Straight Through Duct Fan

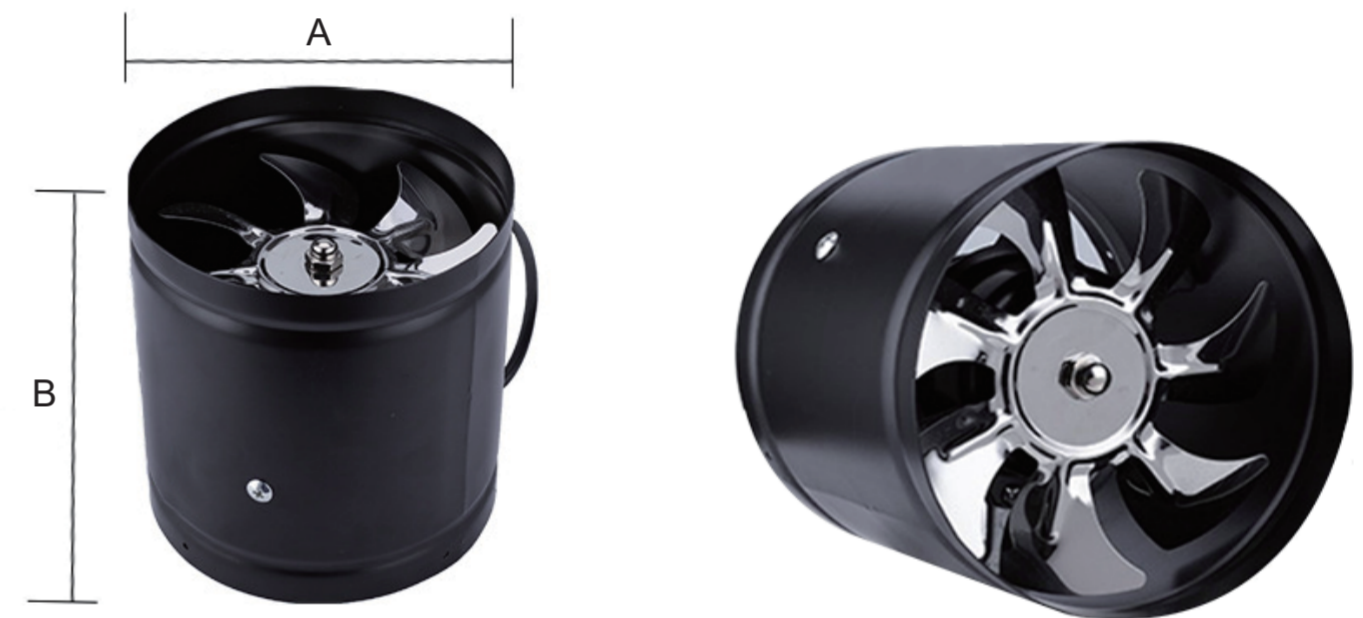
Professional HVAC Fan & Motors Manufacturer



Technical Parameters

Model	Voltage (V)	Frequency (Hz)	Power (W)	Speed (RPM)	Air flow (m³/h)
LWDA-100(4")S-MWN-08	220	50	20	2800	140
LWDA-150(6")S-MWN-08	220	50	40	2800	780
LWDA-180(7")S-MWN-01	220	50	60	2800	1000
LWDA-200(8")S-MWN-08	220	50	80	2800	1300
LWDA-250(10")S-MWN-06	220	50	100	2800	2100
LWDA-300(12")S-MWN-05	220	50	120	2800	3000

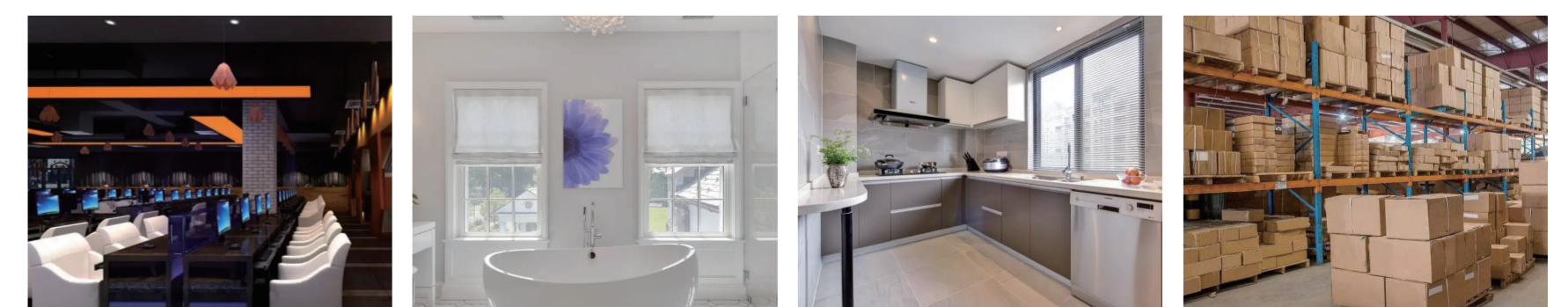
Outline Dimension



Technical Parameters

Model	B (mm)	A (mm)	Air Pressure (Pa)	Noise (dBA)	Color	Wire Length (cm)
LWDA-100(4")S-MWN-08	77	96	58	48	Black/White	30
LWDA-150(6")S-MWN-08	140	150	70	52	Black/White	30
LWDA-180(7")S-MWN-01	140	180	90	58	Black/White	30
LWDA-200(8")S-MWN-08	150	200	140	62	Black/White	30
LWDA-250(10")S-MWN-06	160	250	215	65	Black/White	30
LWDA-300(12")S-MWN-05	160	300	230	68	Black/White	30

Mainly Application



Internet bar

Bathroom

Kitchen

Warehouse

